

AiFace-Jupiter



Wide Pose Angle
Acceptance



Wide Palm Pose Angle
Acceptance



Speedy
Recognition



Touchless for
Better Hygiene

Facial Recognition Time Attendance & Access Control



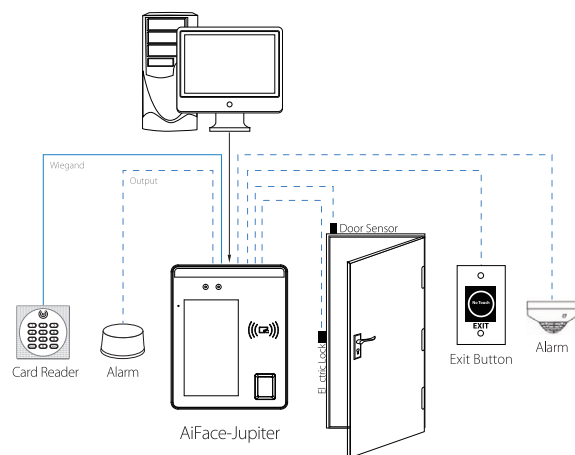
Features

- Visible Light Facial Recognition
- Better hygiene with touchless biometric authentication
- Anti-spoofing algorithm against print attack (laser, color and B/W photos), videos attack and 3D mask attack
- Available card modules: 12.5 KHz EM card / 13.56MHz IC card (MF)
- Supplement light with adjustable brightness
- Multiple Verification Methods: Face / Fingerprint / Card / Password

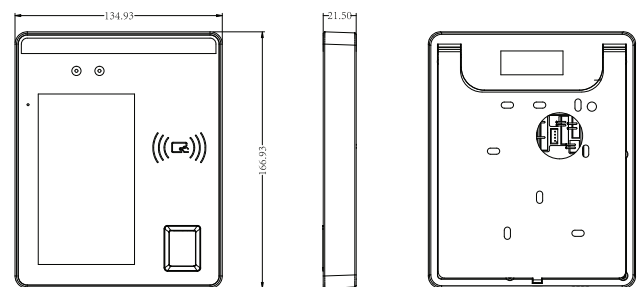
Specifications

Display	5-inch Touch Screen
Face Capacity	6,000 (Standard); 10,000 (Optional)
Fingerprint Capacity	6,000
Card Capacity	10,000
Transactions	200,000
Operation System	Linux
Standard Functions	ID Card, ADMS, T9 Input, DST, Camera, 9-digit User ID, Access Levels, Groups, Anti- passback, Record Query, Tamper Switch Alarm, Multiple Verify Modes.
Hardware	900MHz Dual Core CPU, Memory 512MB RAM / 8G Flash, 2MP WDR Low Light Camera, Adjustable Light Brightness LED
Communication	TCP/IP, WiFi (Optional), Wiegand input / output, RS485
Access Control Interface	3rd Party Electric Lock, Door Sensor, Exit Button, Alarm output, Auxiliary Input
Optional Function	13.56MHz IC Card (MF)
Facial Recognition Speed	≤1s
Biometrics Algorithms	Face V5.8 & Finger V10.0 & Palm V12.0
Power Supply	12V 3A
Operating Humidity	10% - 90%
Operating Temperature	-10°C ~ 45°C (14°F ~ 113°F)
Dimensions (W*H*D)	134.93 * 166.93 * 21.5 (mm)
Supported Softwares	eTimetracklite

Configuration



Dimensions (mm)



Disclaimer: Brief specifications are mentioned here. Specifications may change without prior notice. Customers are advised to check with us before purchase. Actual product may differ slightly to that depicted for ongoing product development

